



ROCKY MOUNT, NC
THE CENTER OF IT ALL

RMEC Parking and Traffic Control Plan

August 27, 2018,
Brad Kerr, Director of Engineering





Trip Generation

Event Type	Parking Demand
Tournament	300
Banquet	330
Concert	1820

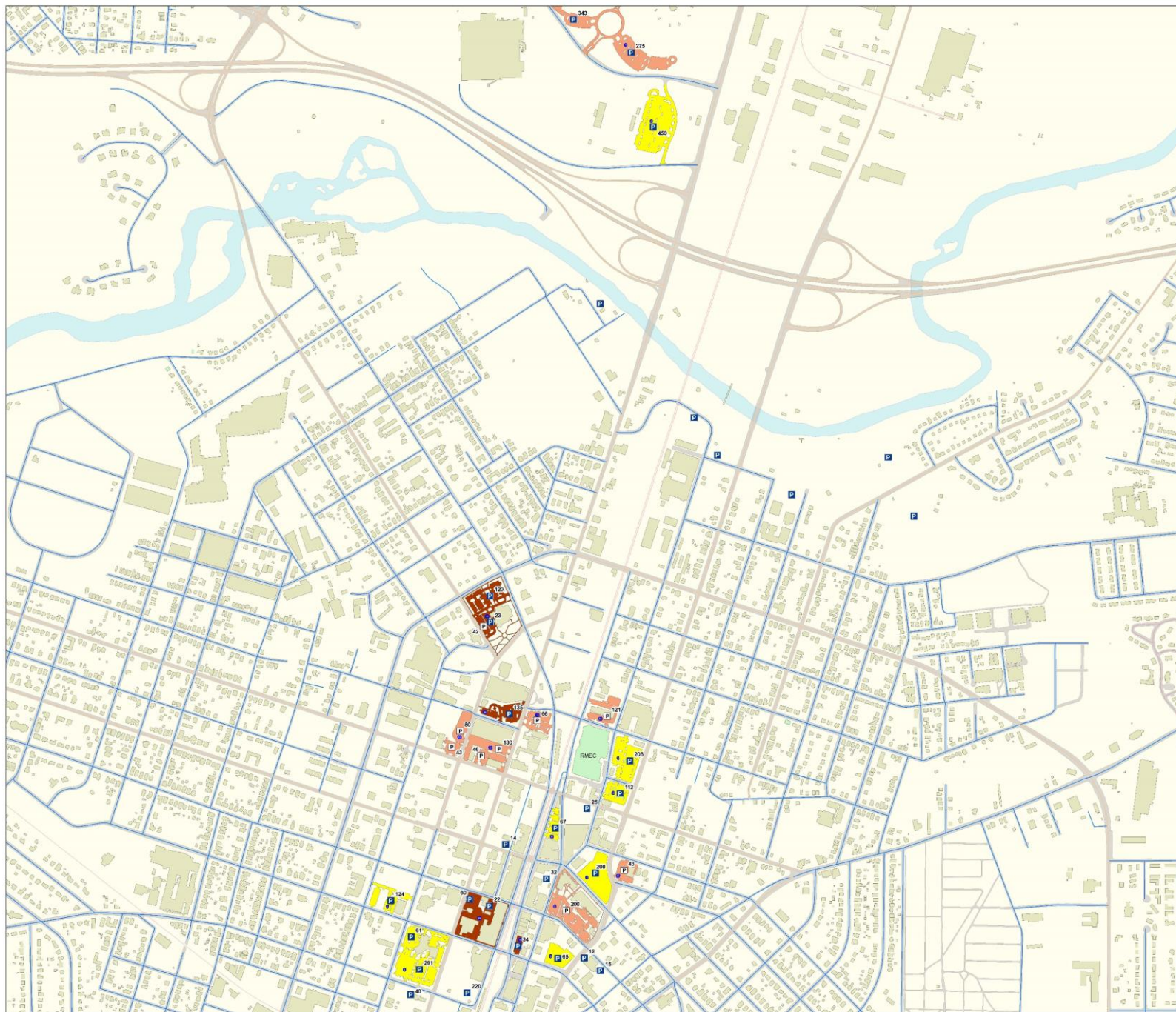
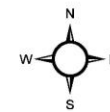
Based on the study completed at the Red Hat Amphitheater in Raleigh, NC (*Raleigh Convention Center - Festival Site*, Kimley-Horn, December 2009), an average vehicle occupancy factor of 2.2 was assumed for this analysis. Using this vehicle occupancy, it was determined that a sold-out concert would generate approximately 1,820 vehicle trips. It is also anticipated that 15 percent of attendees will arrive 1 to 1.5 hours before an event, 35 percent will arrive 30 minutes to 1 hour before an event, and the remaining 50 percent will arrive less than 30 minutes before an event. After an event, it is anticipated that 95% of the traffic will exit the venue within the first 15 minutes.

For a weekend sports tournament event it was assumed that the adjacent parking lots will turn over once an hour (i.e. approximately 300 trips entering and 300 trips exiting).



ROCKY MOUNT
THE CENTER OF IT

Designated Parking Map



Legend

CLASSIFICATION

- PRIVATE
- PUBLIC

Designated

- Y
- Alternate Public
- N
- CRM
- DOT
- PRIVATE
- railroad
- buildings
- Proposed_BLDG

edge of pavement Roads

FCODE

- BRIDGE
- CULVERT
- RAILROAD
- ROAD
- RR
- Tunnel
- tar river

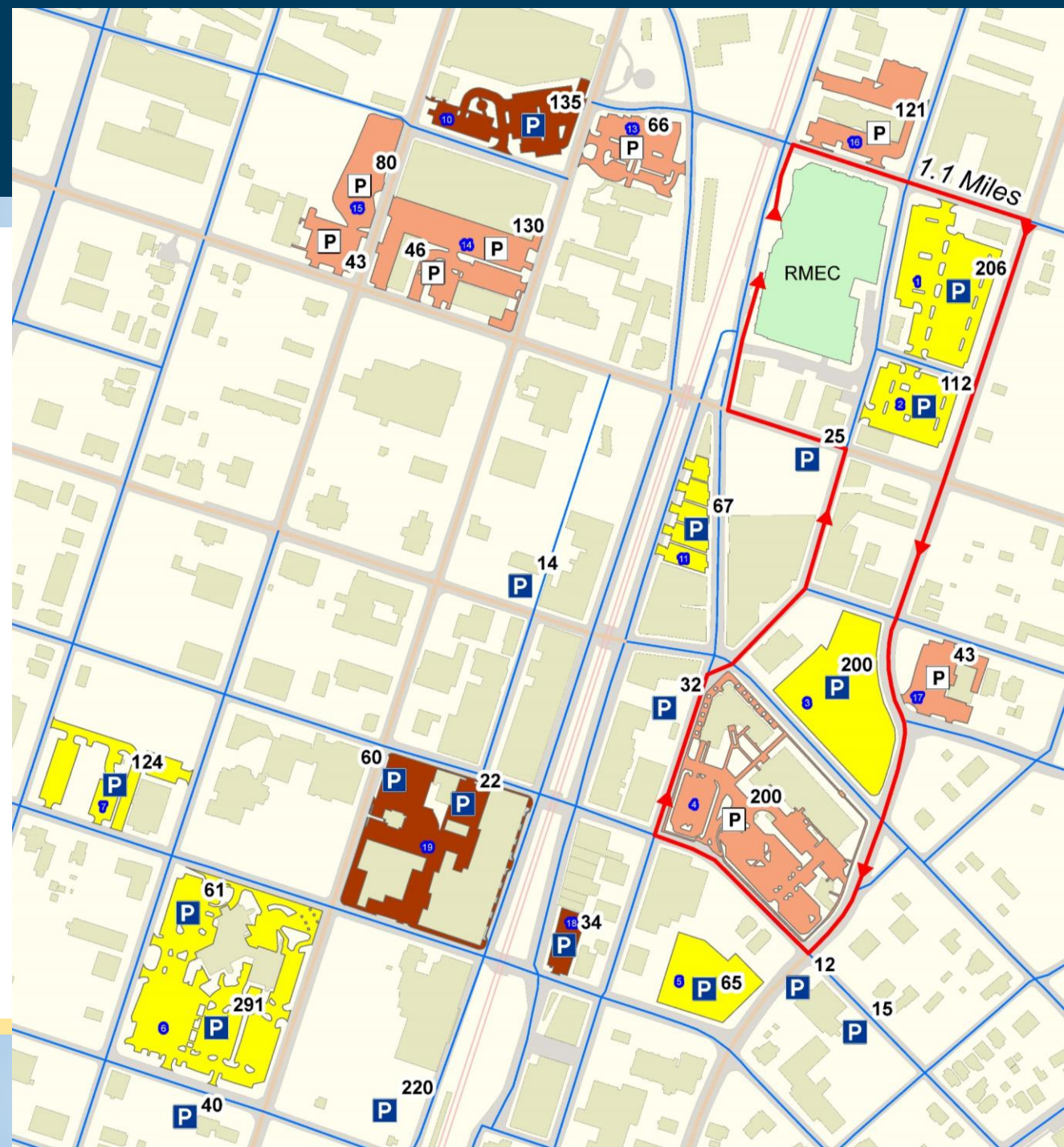
0 150 300 600 900 1,200
Feet



ROCKY MOUNT, NC
THE CENTER OF IT ALL

Shuttle Service

- Staff is setting up on-call contracts for shuttle service to serve designated lots during major events

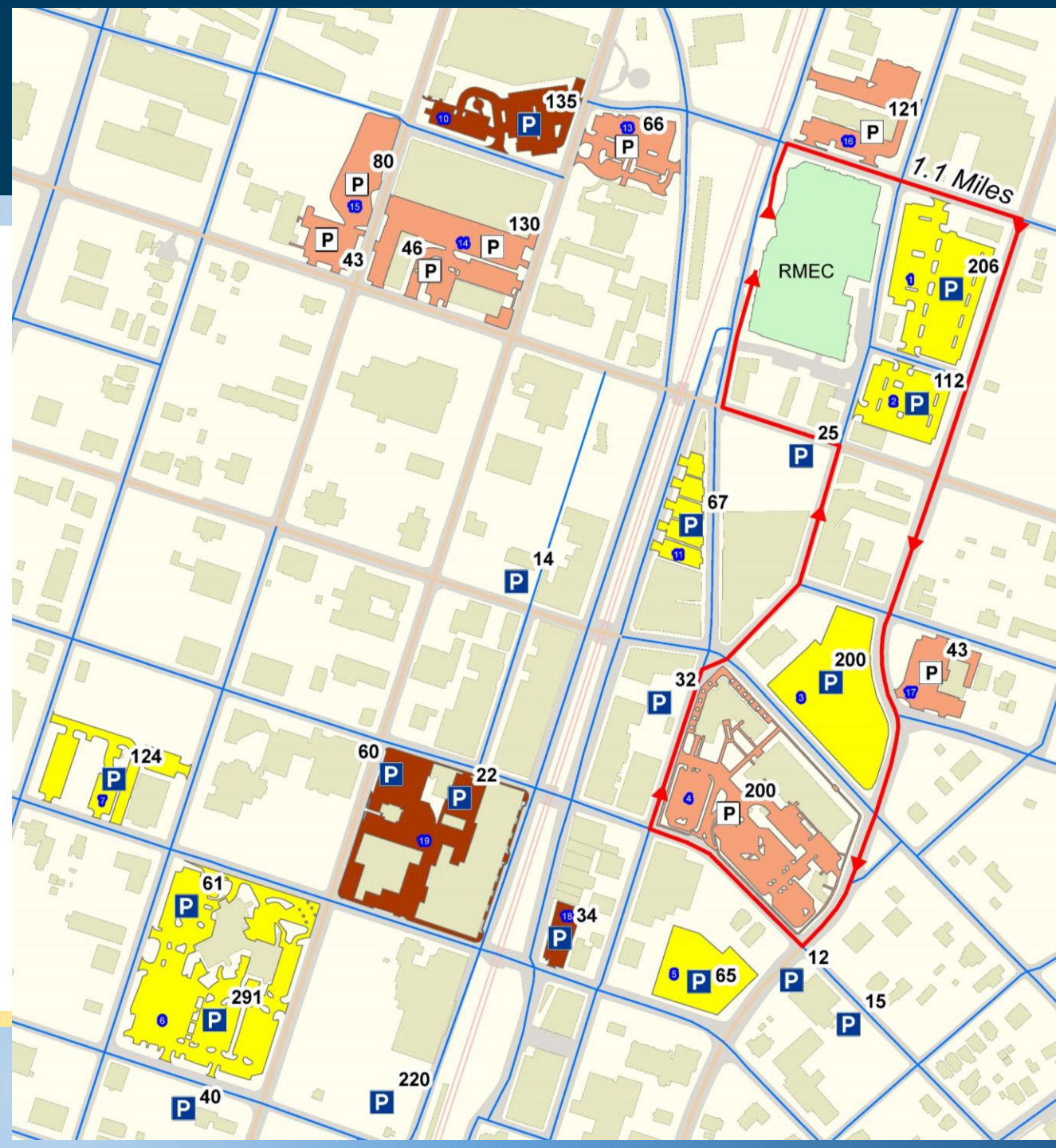




ROCKY MOUNT, NC
THE CENTER OF IT ALL

Shuttle Service

- Red Route (1 of 3)

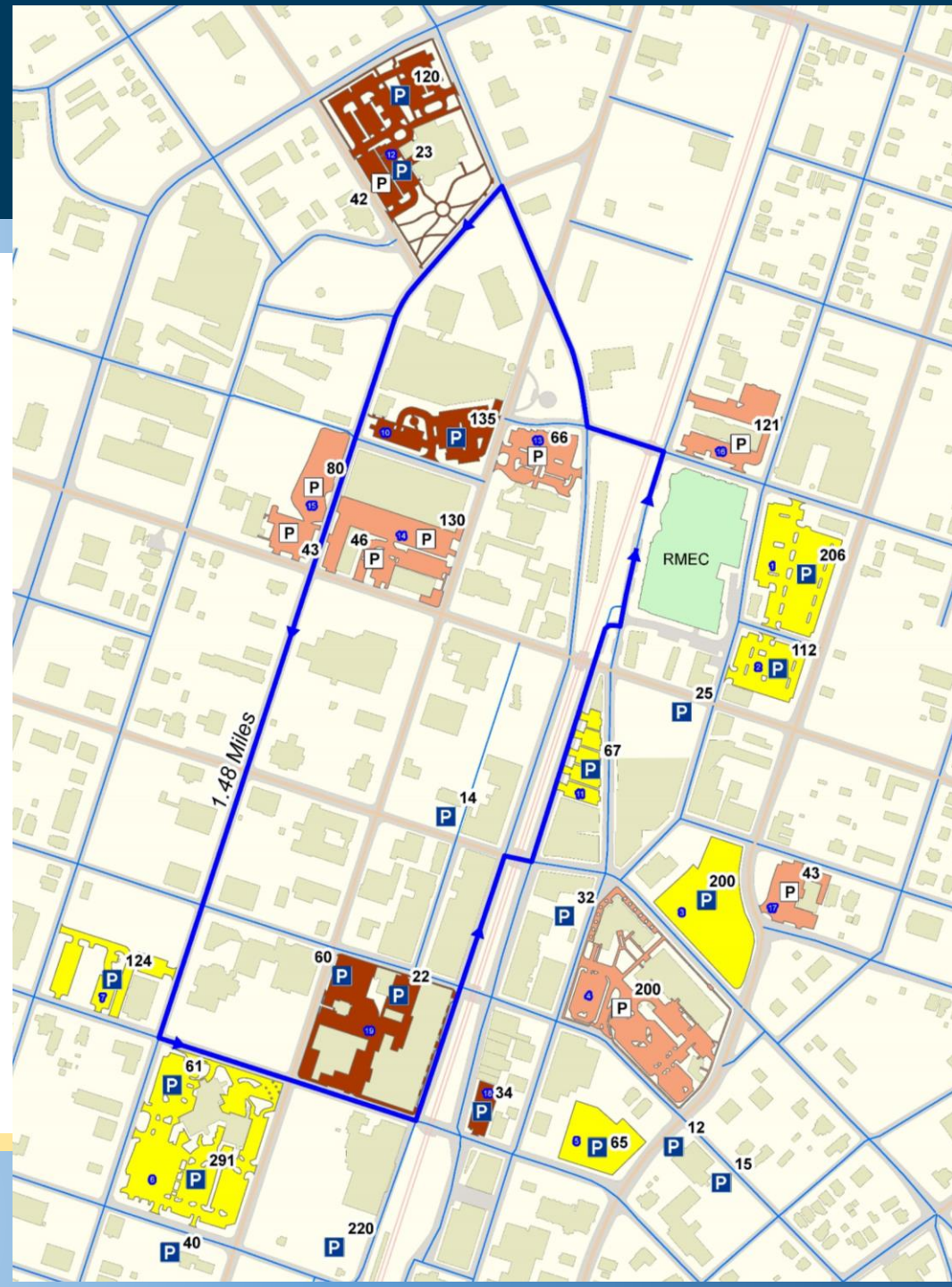




ROCKY MOUNT, NC
THE CENTER OF IT ALL

Shuttle Service

- Blue Route (2 of 3)

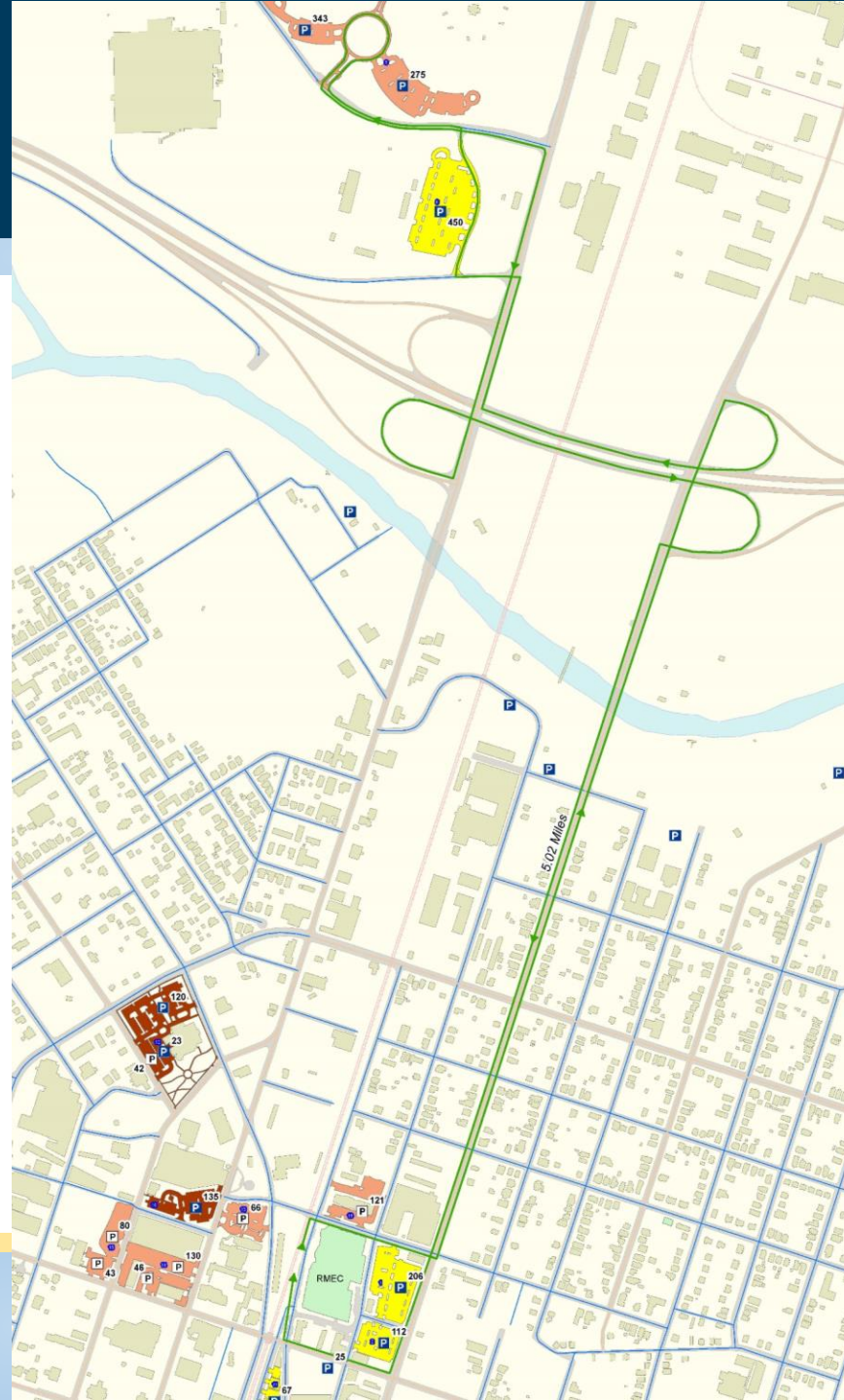




ROCKY MOUNT, NC
THE CENTER OF IT ALL

Shuttle Service

- Green Route (3 of 3)





Parking Count

- 1,456 Designated Off-Street Spaces
 - 1006 Downtown
 - 450 Sports Complex (Overflow)
- Approximately 1,300 on-street spaces in downtown
- In the future, an additional 1,848 spaces in close proximity to the RMEC could be designated through use agreements if necessary.

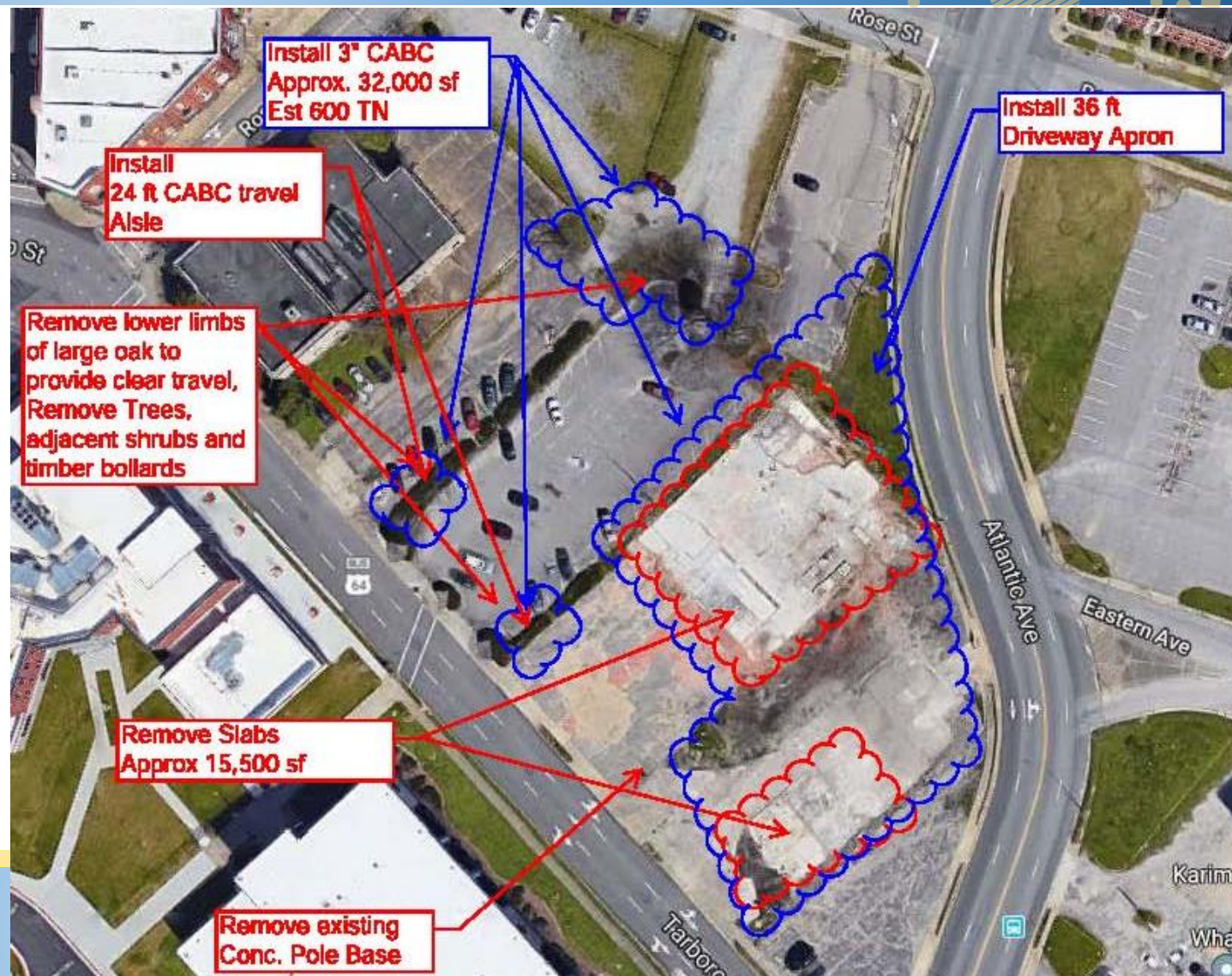
Designated	Route	Lot_ID	Sum of Spaces
Y	1	1	206
		2	112
		3	200
		5	65
	1 Total		583
	2	6	232
		7	124
		11	67
	2 Total		423
Y Total			1006
Overflow	3	8	450
	3 Total		450
Overflow Total			450
Grand Total			1456

Designated	Lot_ID	Status	Sum of Spaces
Y	1	Public	206
	2	Public	112
	3	Public	200
	5	Public	65
	6	Public	232
	7	Public	124
	11	Public	67
Y Total			1006
Overflow	8	Public	450
Overflow Total			450
N	4	County	200
	9	Public	748
	10	Public	135
	12	County	120
	13	Private	66
	14	Private	176
	15	Private	123
	16	Private	121
	17	County	43
	18	Public	34
	19	Public	82
N Total			1848
Grand Total			3304



Short Term Improvements

- Short term improvements are proposed to facilitate parking on the Tarboro Street and Marigold Street lots.

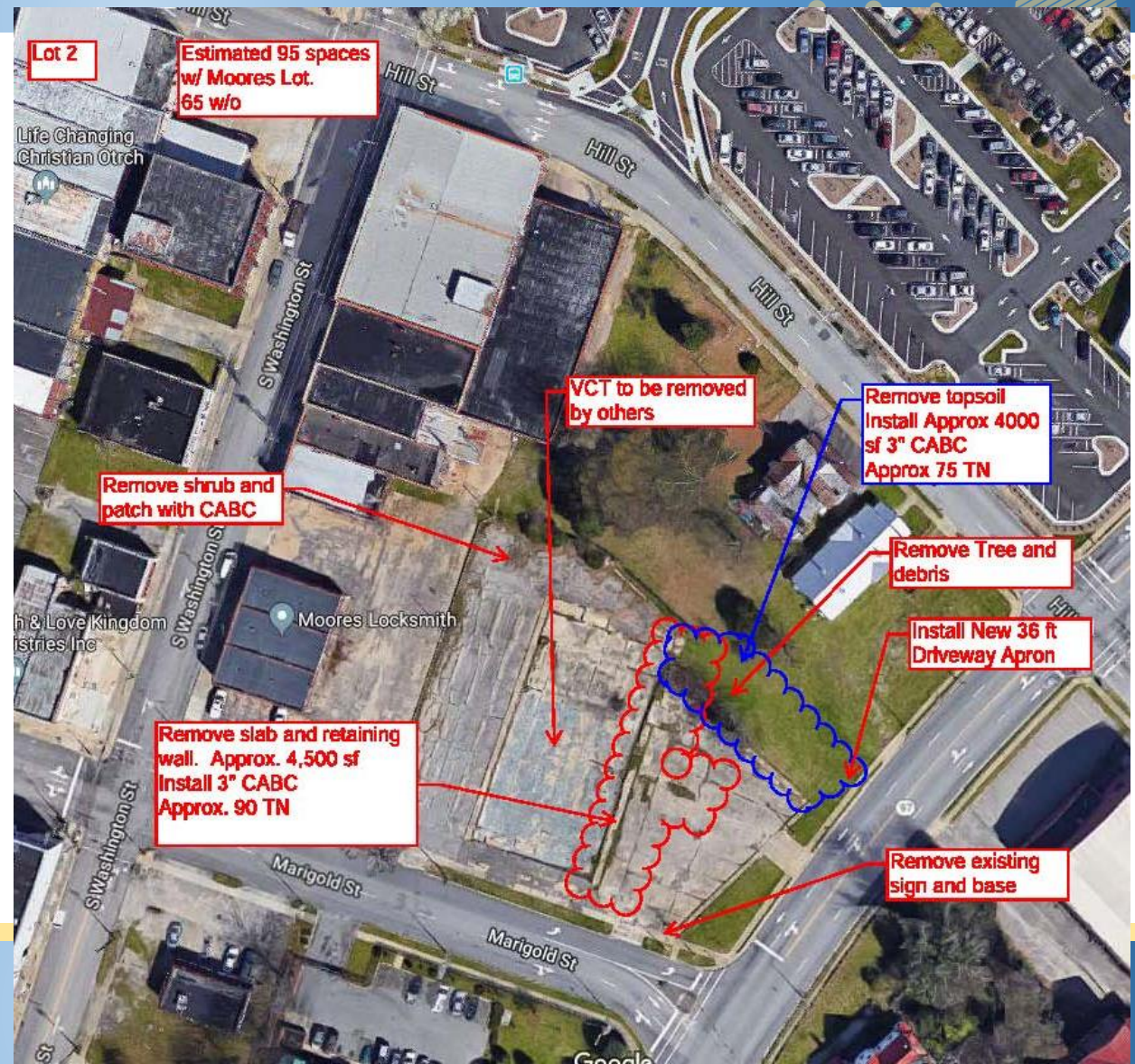




ROCKY MOUNT, NC
THE CENTER OF IT ALL

Short Term Improvements

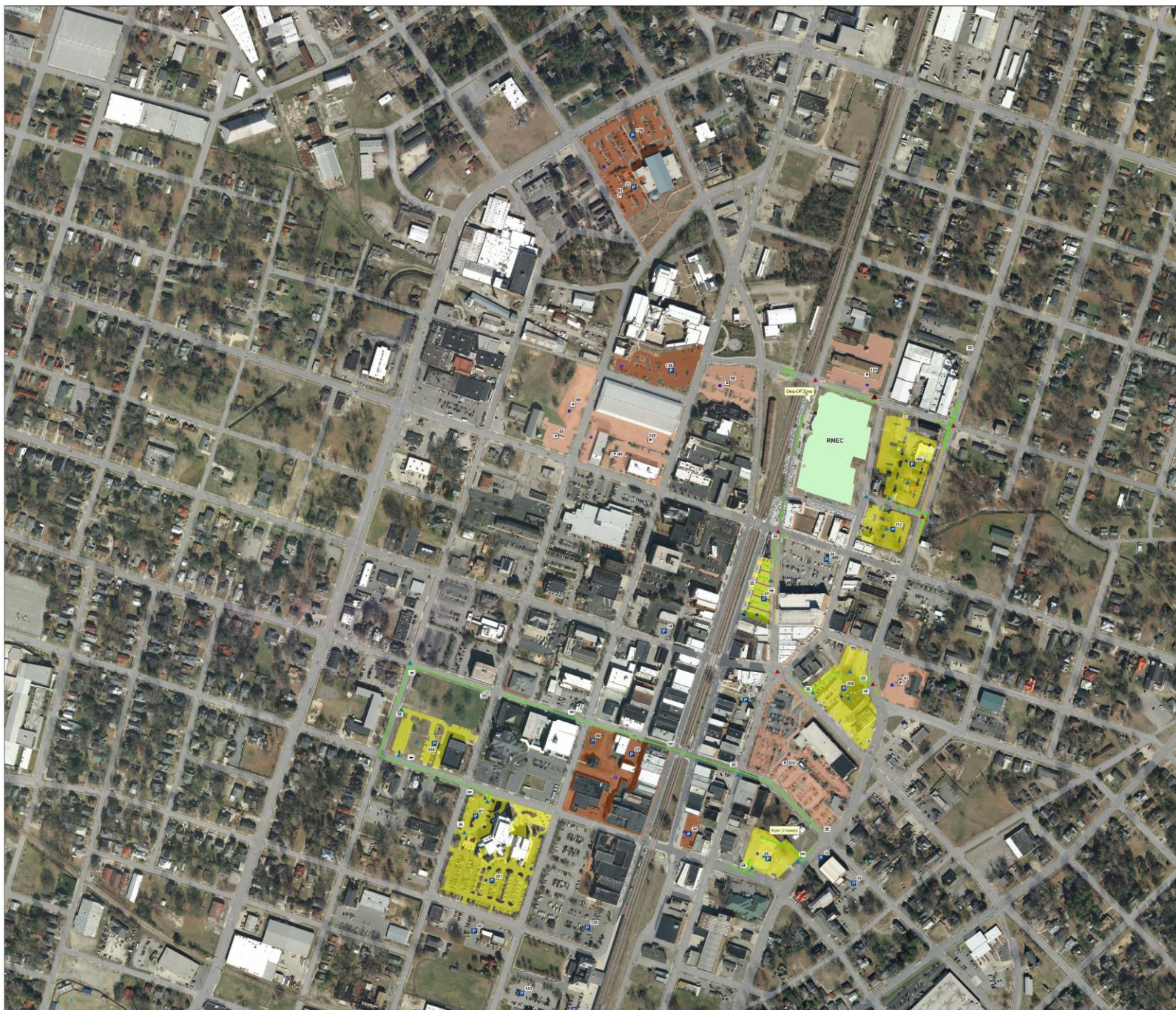
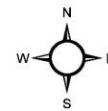
- Short term improvements are proposed to facilitate parking on the Tarboro Street and Marigold Street lots.





ROCKY MOUNT
THE CENTER OF IT

Traffic Control Plan



Legend

- ⊞ Barricade
- ⊞ Directional Sign

Type

- ▲ NU
- ▲ RMPD
- ▲ RMPD Mobile Command
- Directional Arrow
- ⋯ Lane Control

CLASSIFICATION

- PRIVATE
- PUBLIC

Designated

- Alternate Public
- N
- Y
- railroad
- Proposed_BLDG

edgeofpavement Roads

FCODE

- BRIDGE
- CULVERT
- RAILROAD
- ROAD
- RR
- Tunnel
- tar river

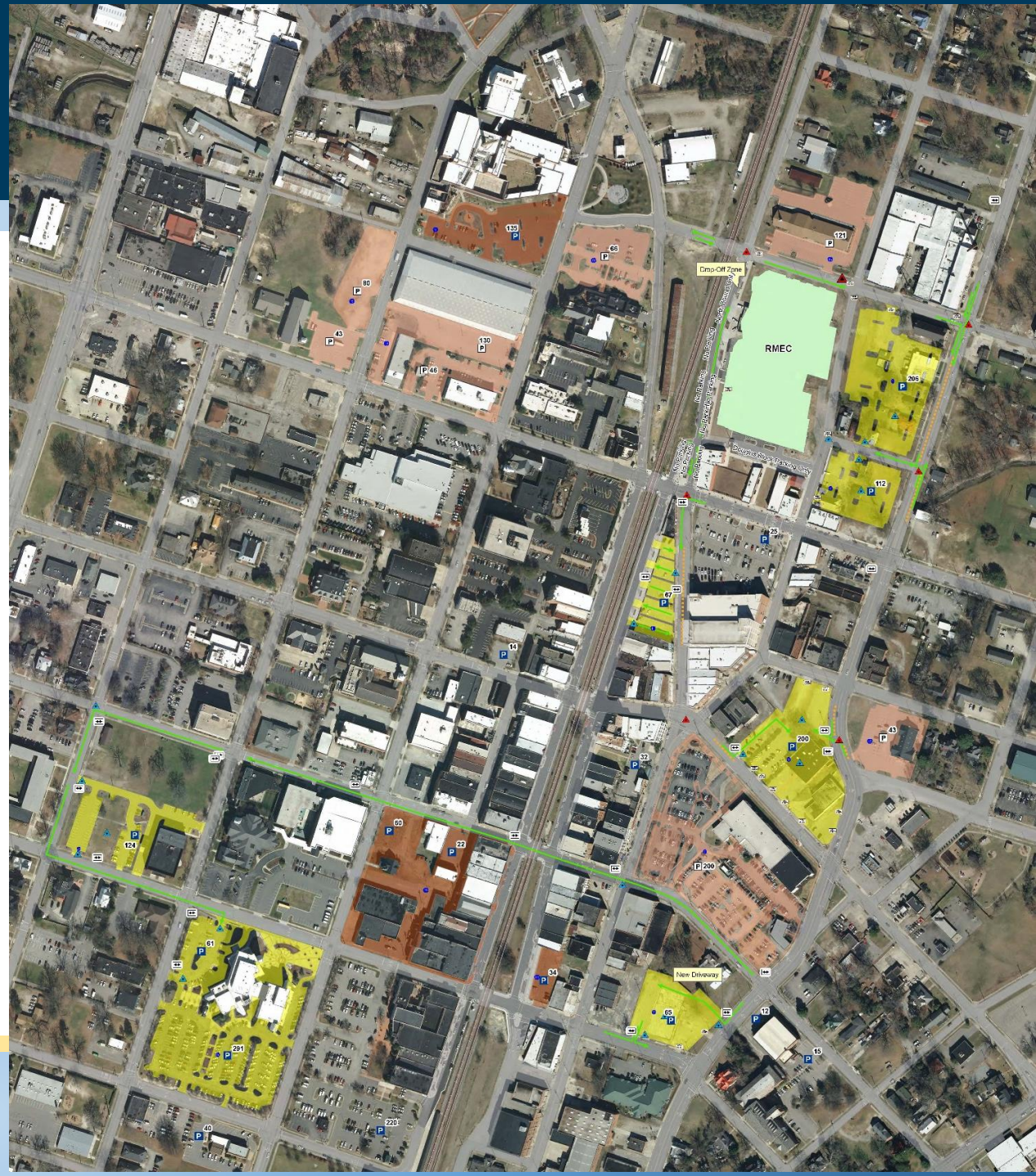
0 75 150 300 450 600 Feet



ROCKY MOUNT, NC
THE CENTER OF IT ALL

Traffic Control

- Traffic control at 6 identified intersections will be manned by RMPD.
- RMEC internal traffic control will be managed by SFM.
- Traffic control at designated off-site parking lots will be managed by City staff or a Parking Management vendor under contract to the City.
- Cones and barricades will be set up at strategic points to manage traffic flow.

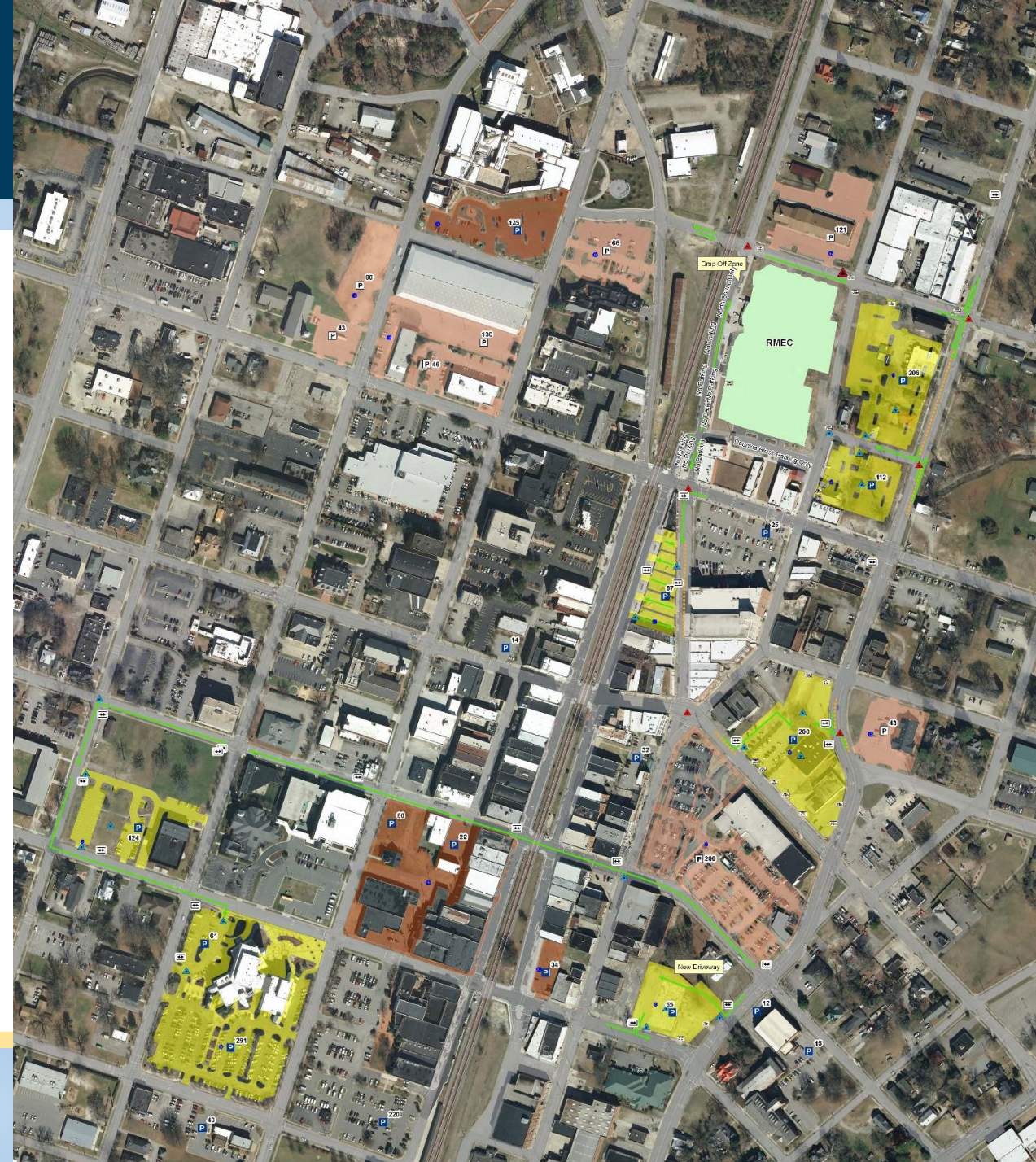




ROCKY MOUNT, NC
THE CENTER OF IT ALL

Traffic Control

- NE Main from Thomas St to Goldleaf is proposed to be converted to one-way northbound during major events
- On-street parking on NE Main St in the immediate vicinity of the RMEC is proposed to be prohibited during major events.
- Parking between Douglas Block and RMEC will be reserved for Douglas Block tenants.
- Albemarle Ave from Ivy St to Goldleaf St is proposed to be closed during major events.





ROCKY MOUNT, NC
THE CENTER OF IT ALL

Questions





ROCKY MOUNT, NC
THE CENTER OF IT ALL

Traffic Control

On-Site Lots

- All traffic into the on-site parking lots will be from Ivy St.
- Driveways on Albemarle Ave and Goldleaf Street will be exit only. All on-site driveways will be open for exiting traffic.



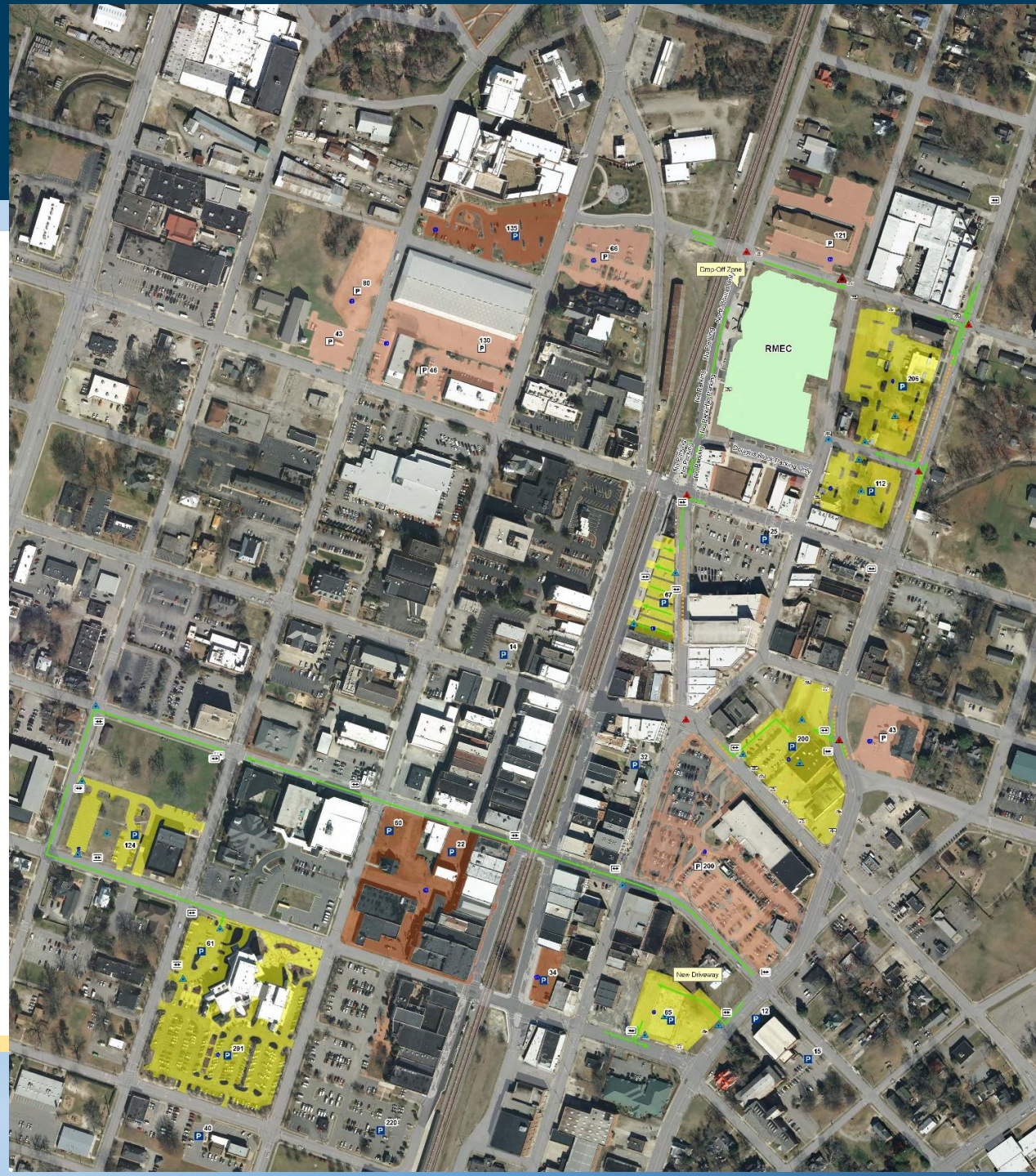


ROCKY MOUNT, NC
THE CENTER OF IT ALL

Traffic Control

Tarboro Street lot:

- Single entrances from Atlantic Ave and Tarboro St. All other entrances to be blocked.
- Exiting traffic pushed Tarboro Street and through signalized intersection at Tarboro and Atlantic.
- Eastbound lane of Rose Street to be closed.
- Marigold Street Lot:
 - Entrances form Atlantic/Arlington Street and Marigold Street.
 - Exit onto Marigold Street





ROCKY MOUNT, NC
THE CENTER OF IT ALL

Traffic Control

City Hall, Customer Service Building, Sports Complex

- Customer Service Building lot entrance will be on Pearl Street
- City Hall Lot entrance will be on Nash Street
- Sports Complex Stadium lot will be accessible from Barnum and Independence





ROCKY MOUNT, NC
THE CENTER OF IT ALL

Wayfinding

- RMEC Branded portable directional signage will be positioned at key points to direct traffic to designated lots.
- Permanent wayfinding to the RMEC and uniform public parking signage is under design.
- Portable signs will supplement permanent signs for designated Event Parking

